



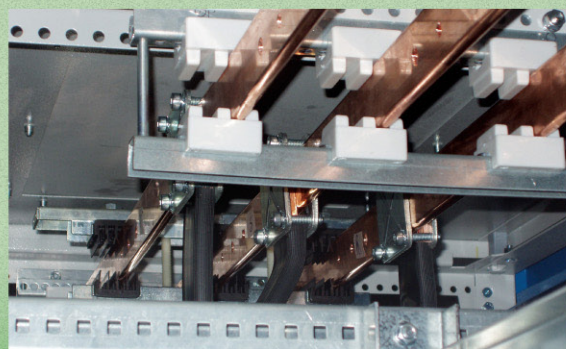
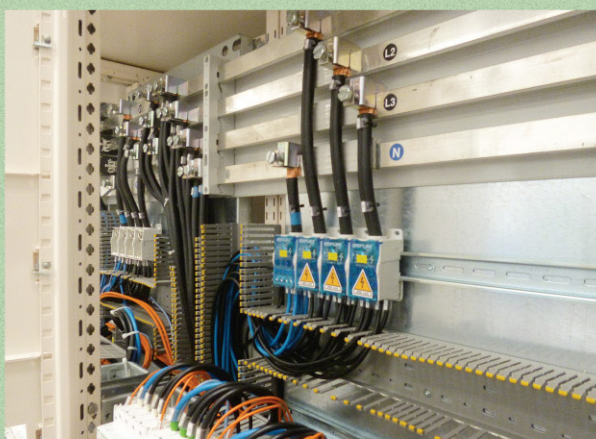
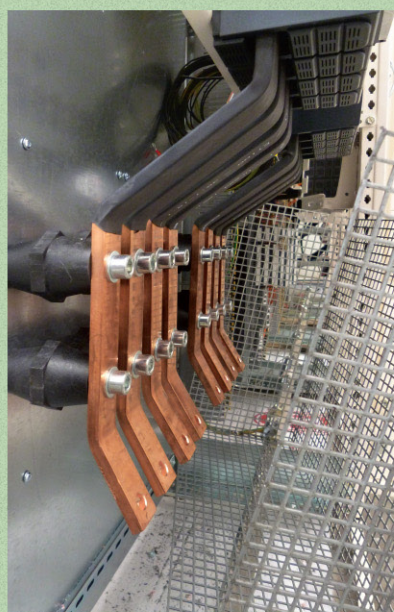
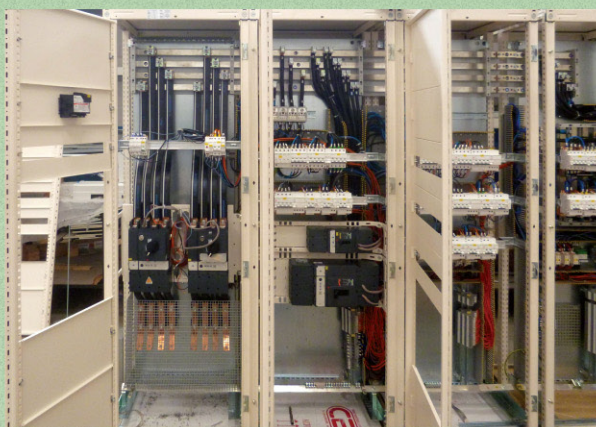
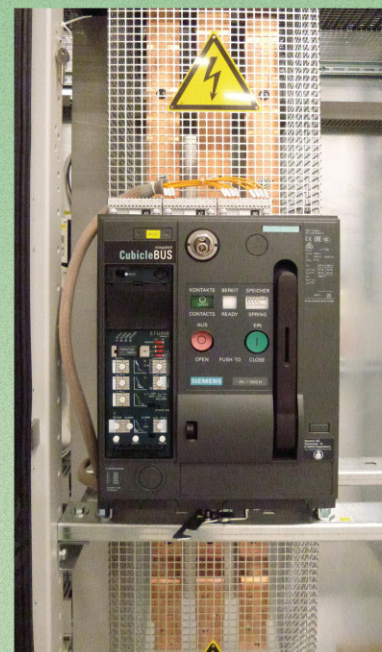
selettra®

TECNOLOGIE PER L'AUTOMAZIONE ED IL CONTROLLO DI PROCESSO
Automation and process control technology



UL Listed per USA e CANADA
(file number E356731 - UL508A)
(file number E518788 - UL891)

QUADRI ELETTRICI DI DISTRIBUZIONE IEC IEC Electrical Distribution Panel



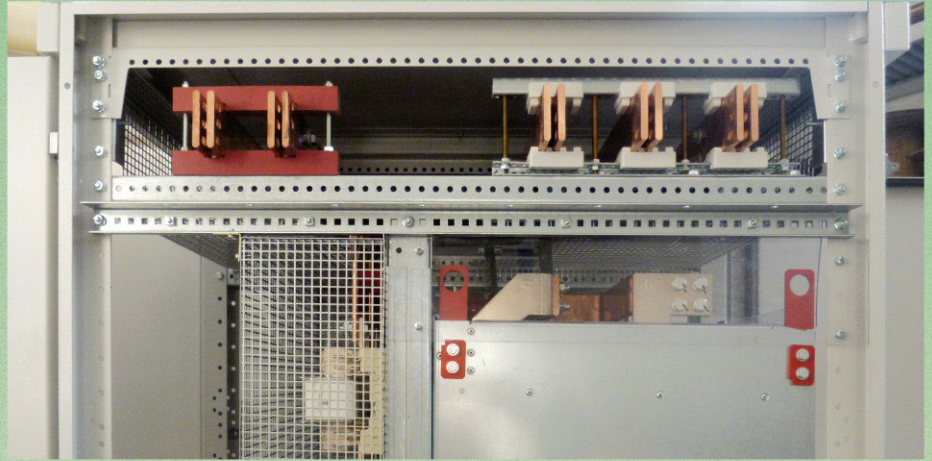


TECNOLOGIE PER L'AUTOMAZIONE ED IL CONTROLLO DI PROCESSO
Automation and process control technology



UL Listed per USA e CANADA
(file number E356731 - UL508A)
(file number E518788 - UL891)

QUADRI ELETTRICI DI DISTRIBUZIONE IEC IEC Electrical Distribution Panel





selettra[®]

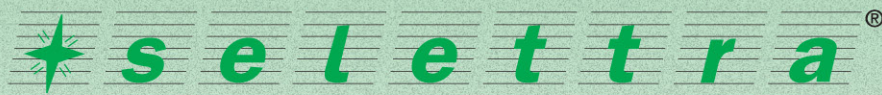
TECNOLOGIE PER L'AUTOMAZIONE ED IL CONTROLLO DI PROCESSO
Automation and process control technology



UL Listed per USA e CANADA
(file number E356731 - UL508A)
(file number E518788 - UL891)

QUADRI ELETTRICI DI DISTRIBUZIONE UL891 per USA e CANADA UL891 Distribution Panel for Usa and Canada



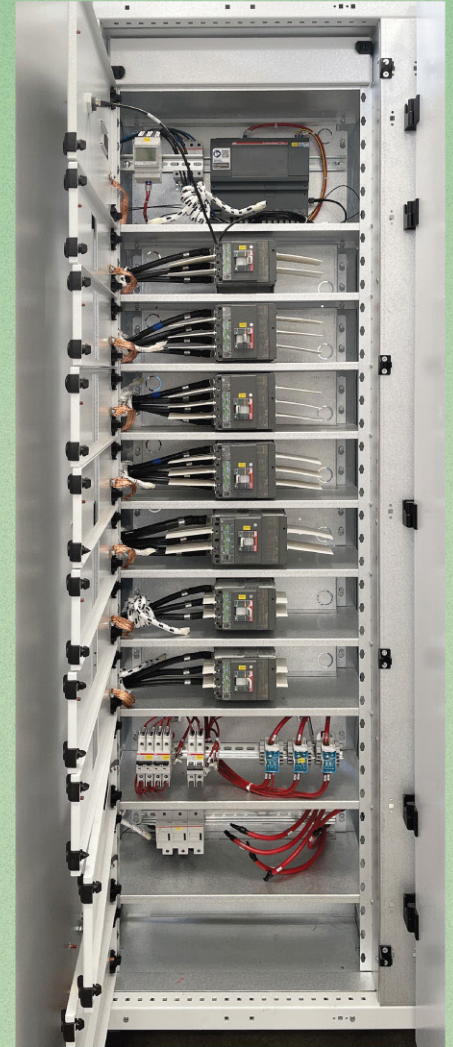


TECNOLOGIE PER L'AUTOMAZIONE ED IL CONTROLLO DI PROCESSO
Automation and process control technology



UL Listed per USA e CANADA
(file number E356731 - UL508A)
(file number E518788 - UL891)

QUADRI ELETTRICI DI DISTRIBUZIONE UL891 per USA e CANADA UL891 Distribution Panel for Usa and Canada



selettra
PARTNER GLOBALE PER L'INTEGRAZIONE DI SISTEMI DI AUTOMAZIONE
Global Automation System Integration Partner

	MAIN LINE	2nd LINE	3rd LINE
Voltage	480 V ~	110 V ~	110 V ~
Phase	3P+N	3P	3P
Frequency	60 Hz	60Hz	60Hz
Total FLA	1398 A	31,5 A	42 A
SCCR	25 kA	25 kA	25 kA

Enclosure Type	TYPE I
Equipment No.	23024-Q481 S
Electrical Part No.	SN-21027-01
Field Wiring Diagram	ED-21027-01

DEAD FRONT SWITCHBOARD

